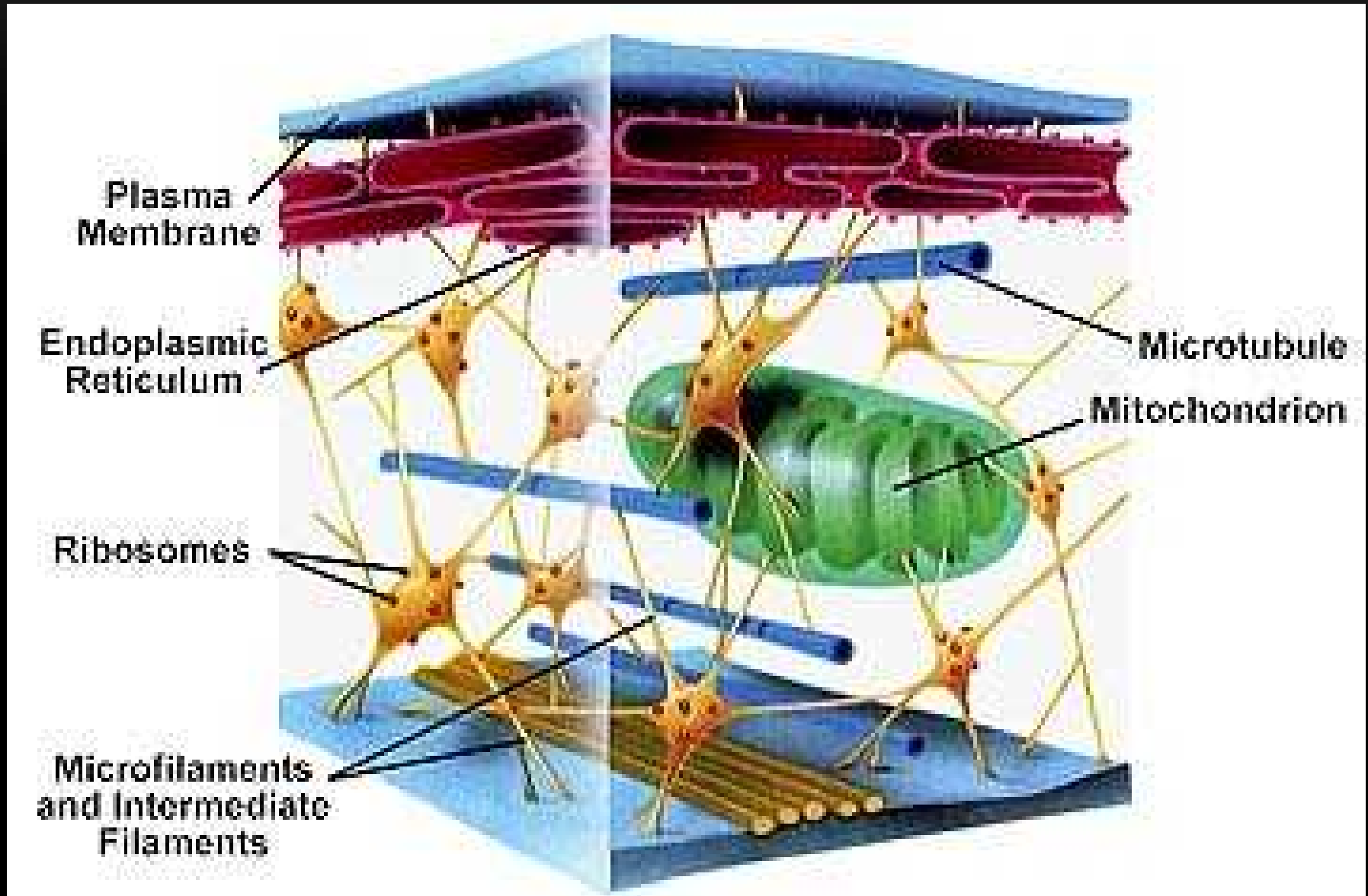
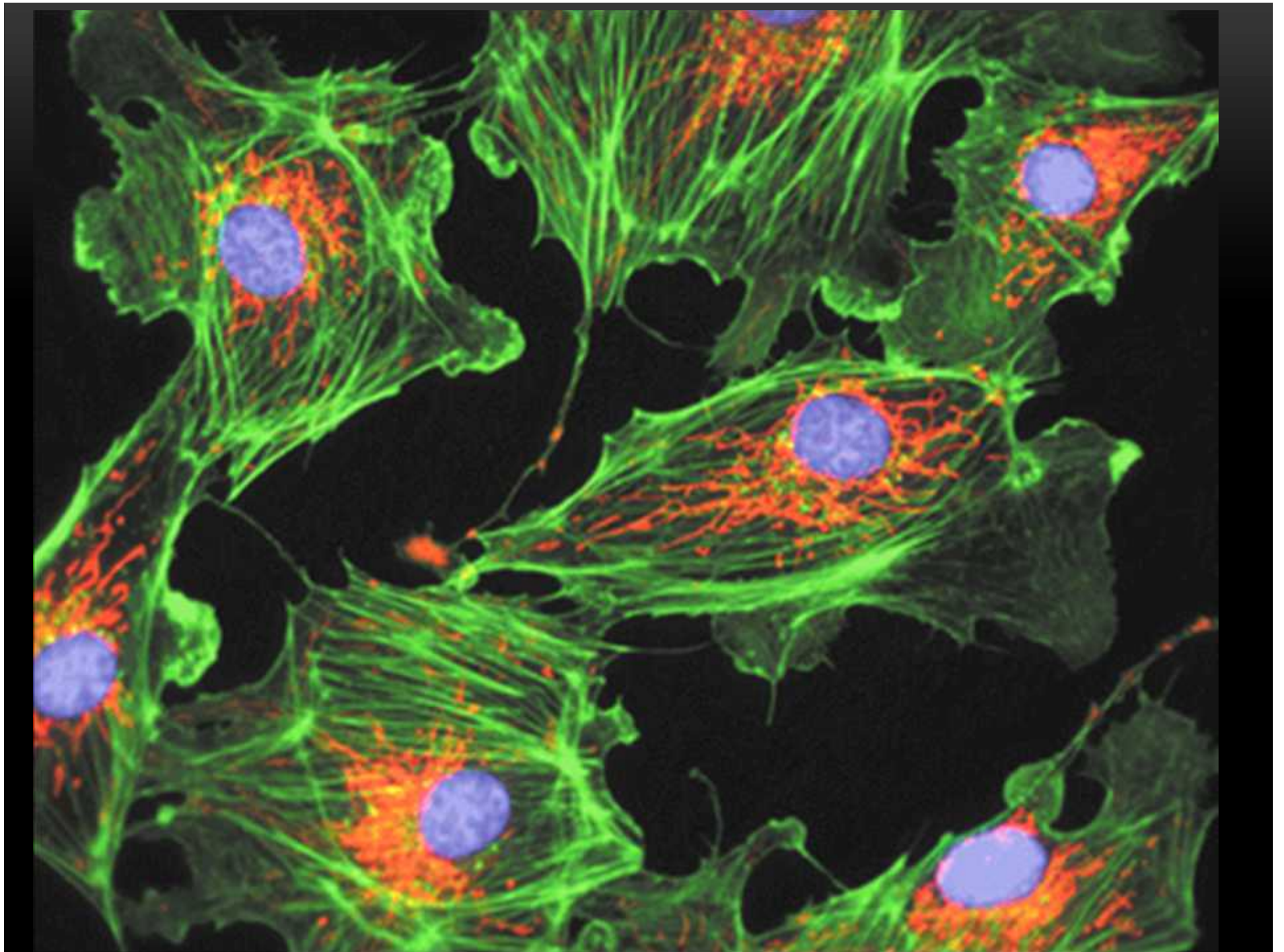


CITOESQUELETO

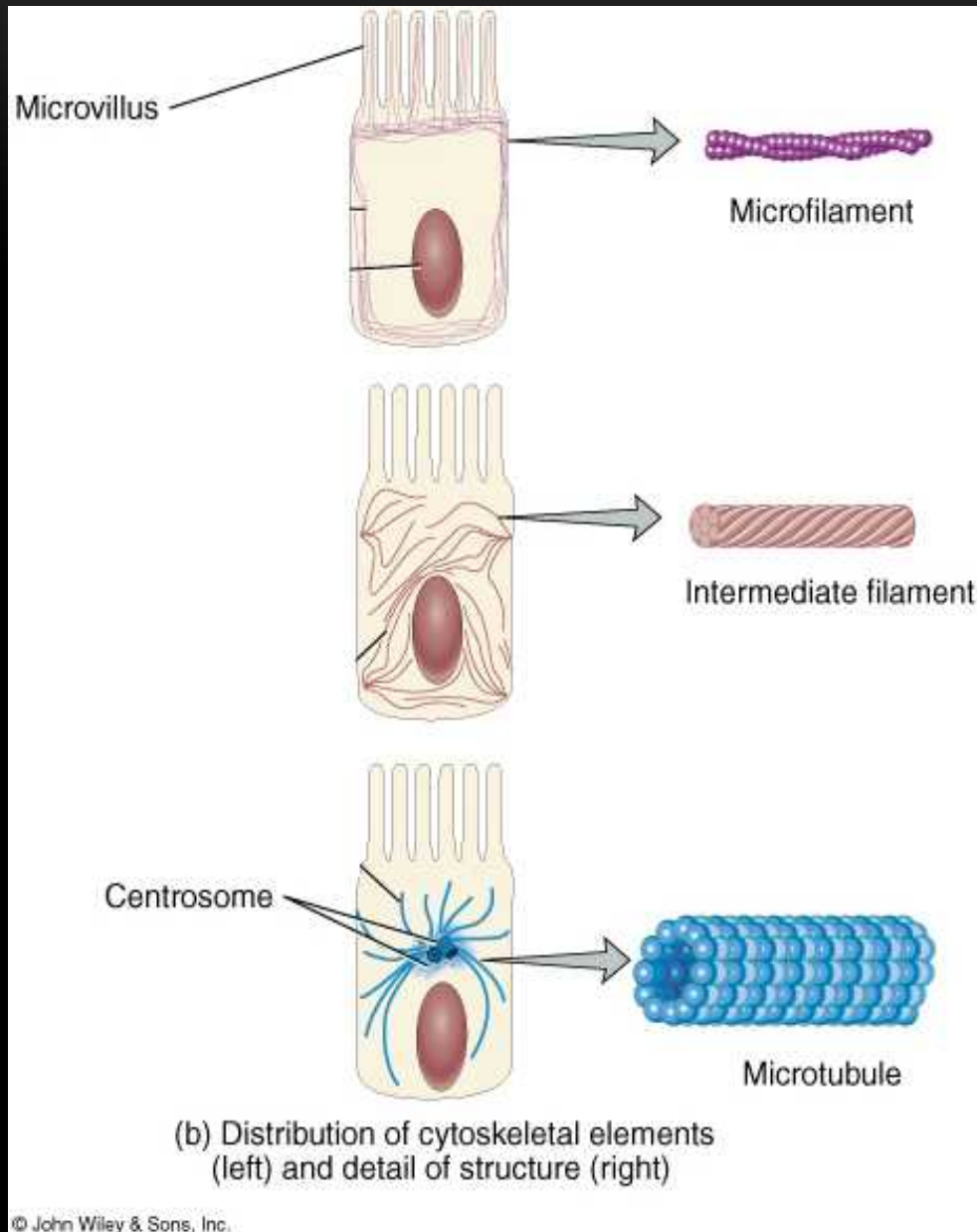
Miss Marcela Saavedra Aravena.

CITOESQUELETO

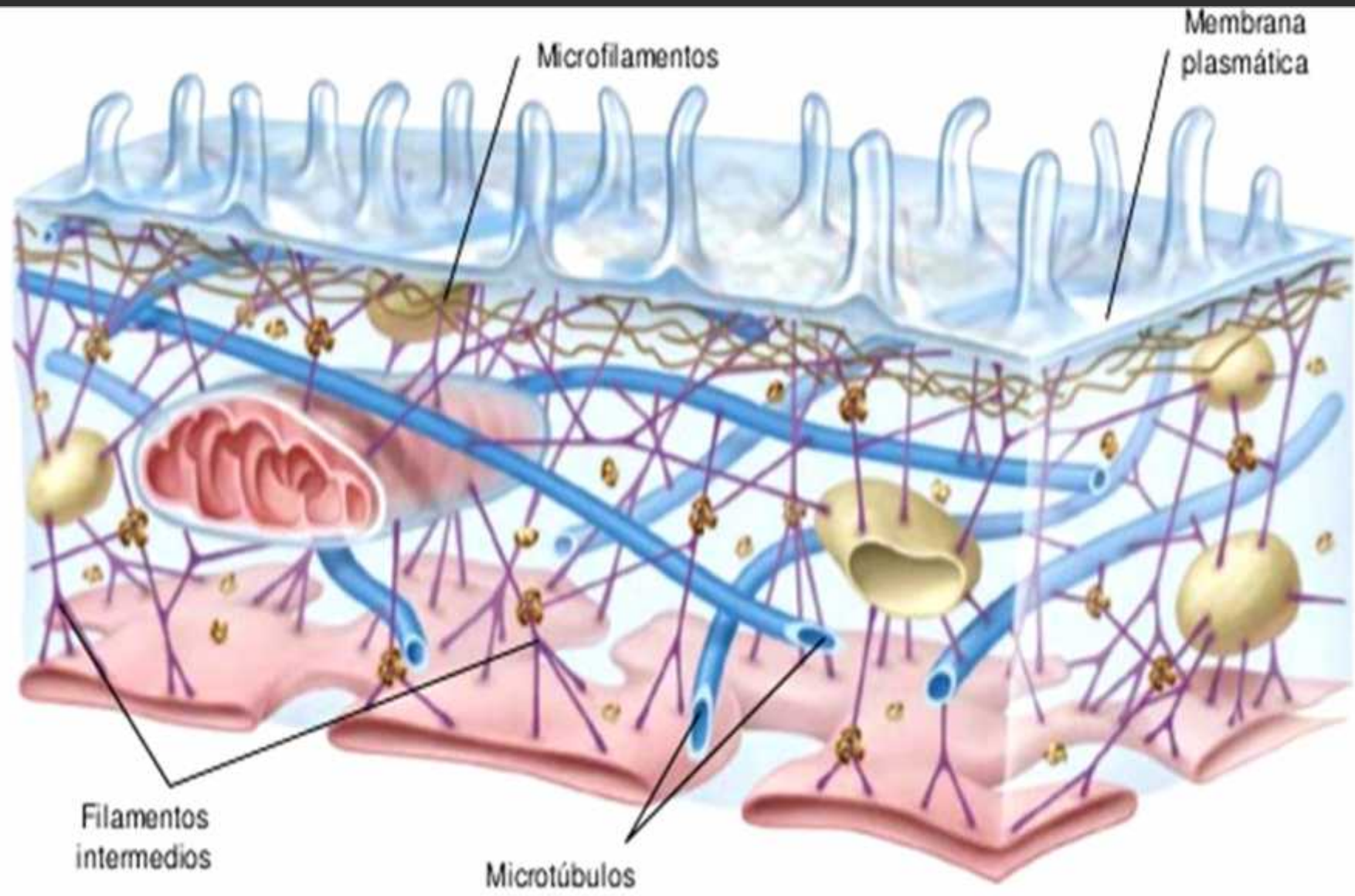




Microtúbulos, filamentos intermedios y microfilamentos

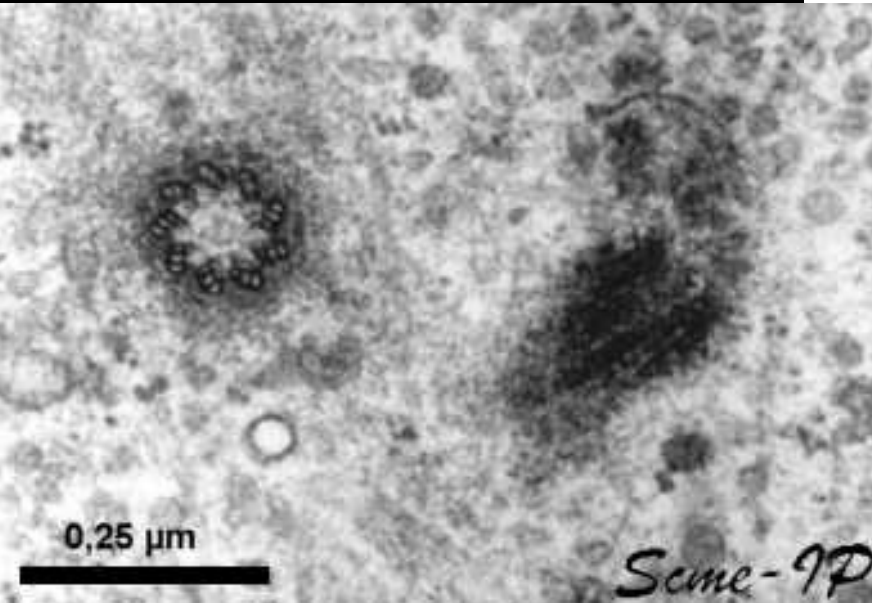
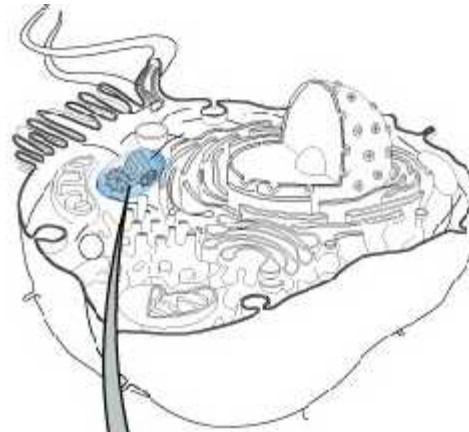


- Estructuras sólidas, de subunidades de actina
- Soporte estructural, movimiento celular y de organelos, división celular
- Fibras resistentes estables, formadas de polipéptidos: Ej. Miosina
- Refuerzan citoesqueleto, estabilizan la forma celular
- Tubos huecos de tubulina
- Soporte estructural, movimiento celular y de organelos, división celular, en cilios, flagelos y centriolos.

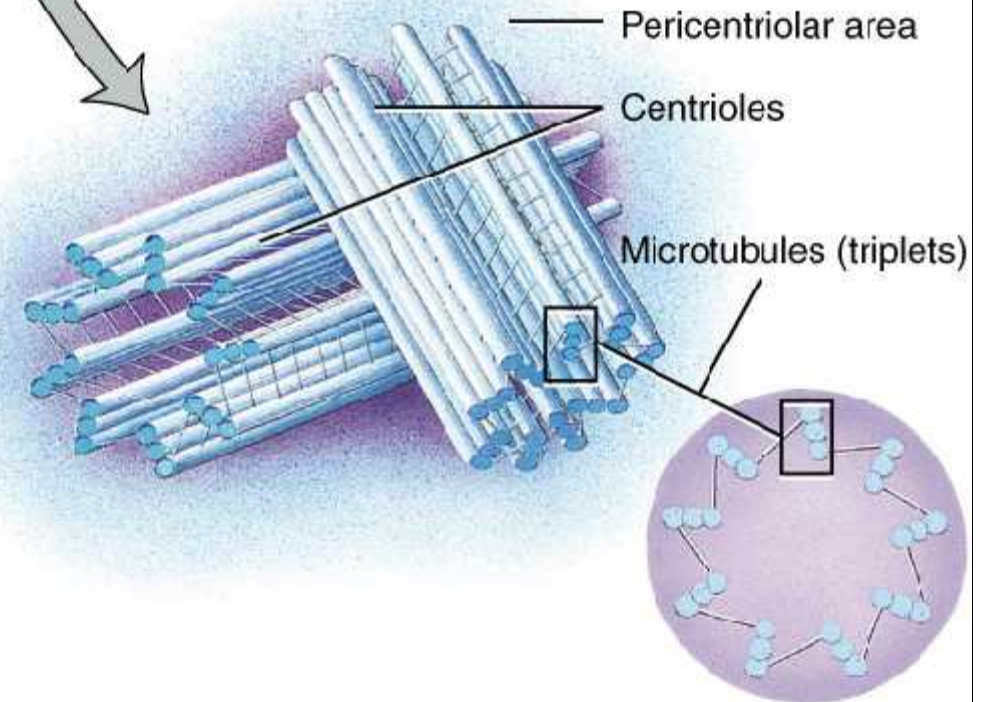


CENTRIOLOS

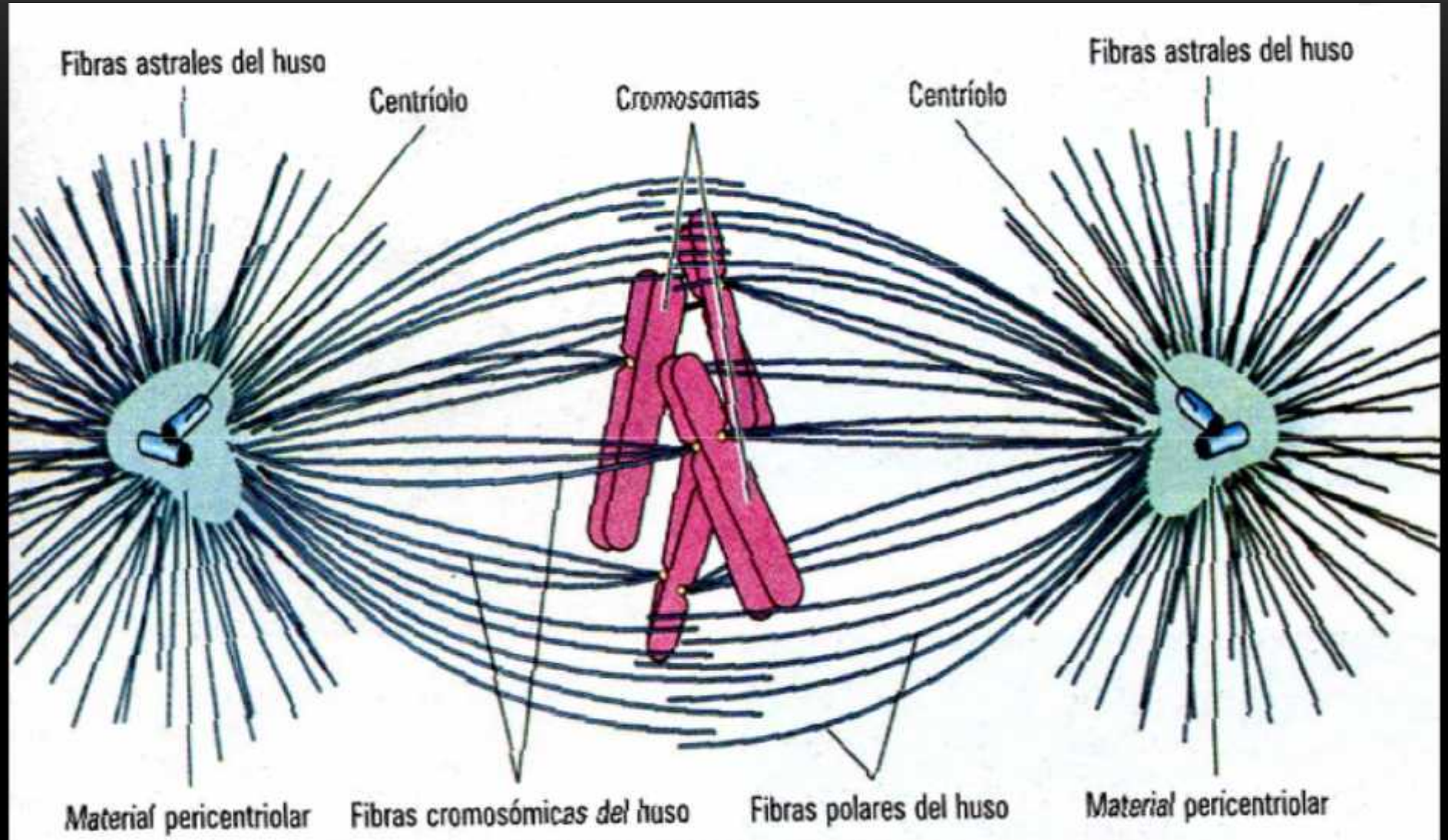
- Organización del huso mitótico
- Ausente en plantas



(a) Details of a centrosome

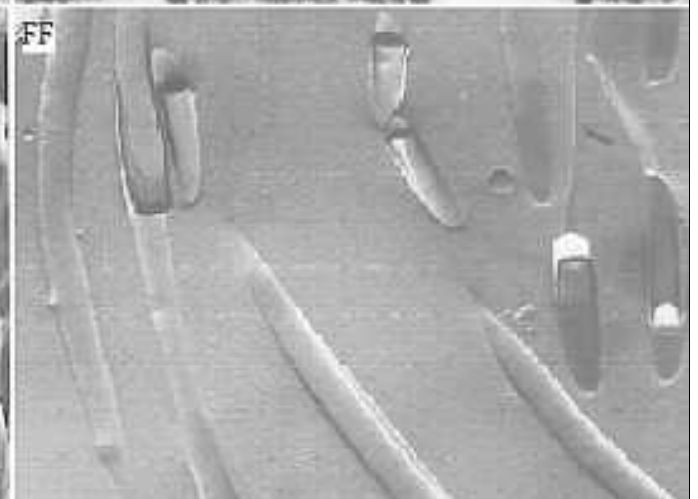
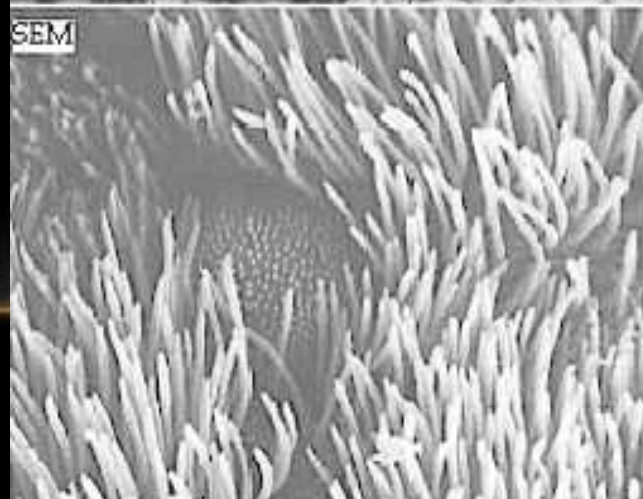
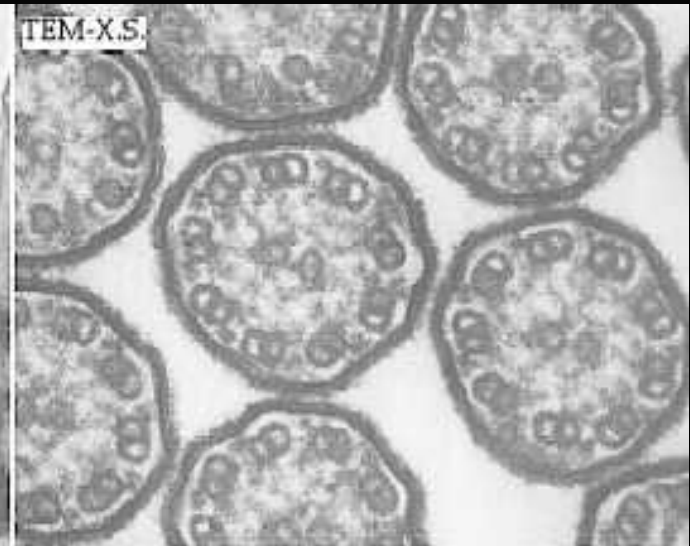


(b) 9 + 0 array of centriole



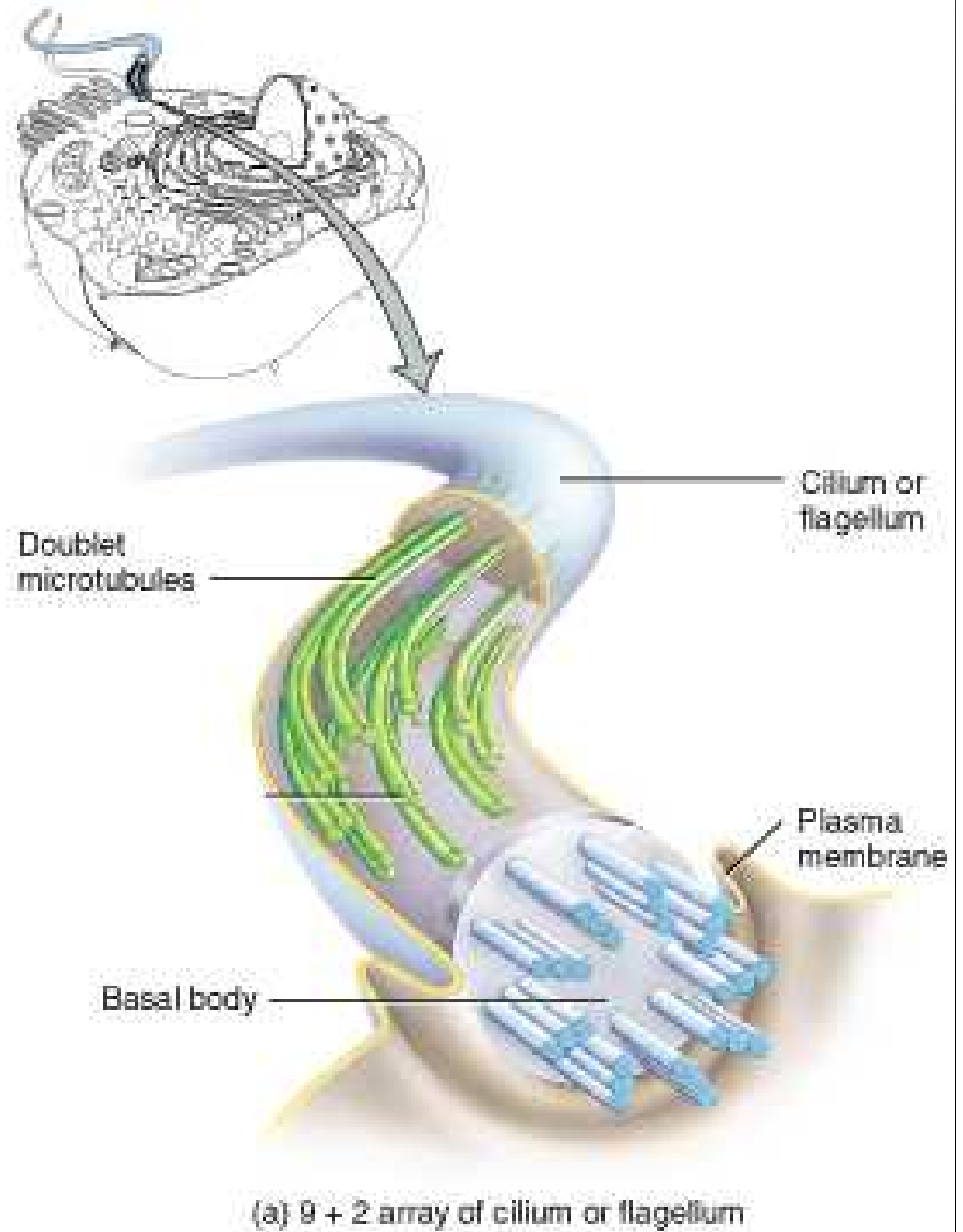
CILIOS

- Desplazamiento en organismos unicelulares



FLAGELOS

- Locomoción de espermatozoides y algunos organismos unicelulares



MEMBRANA PLASMÁTICA

MEMBRANA: ESTRUCTURA

